

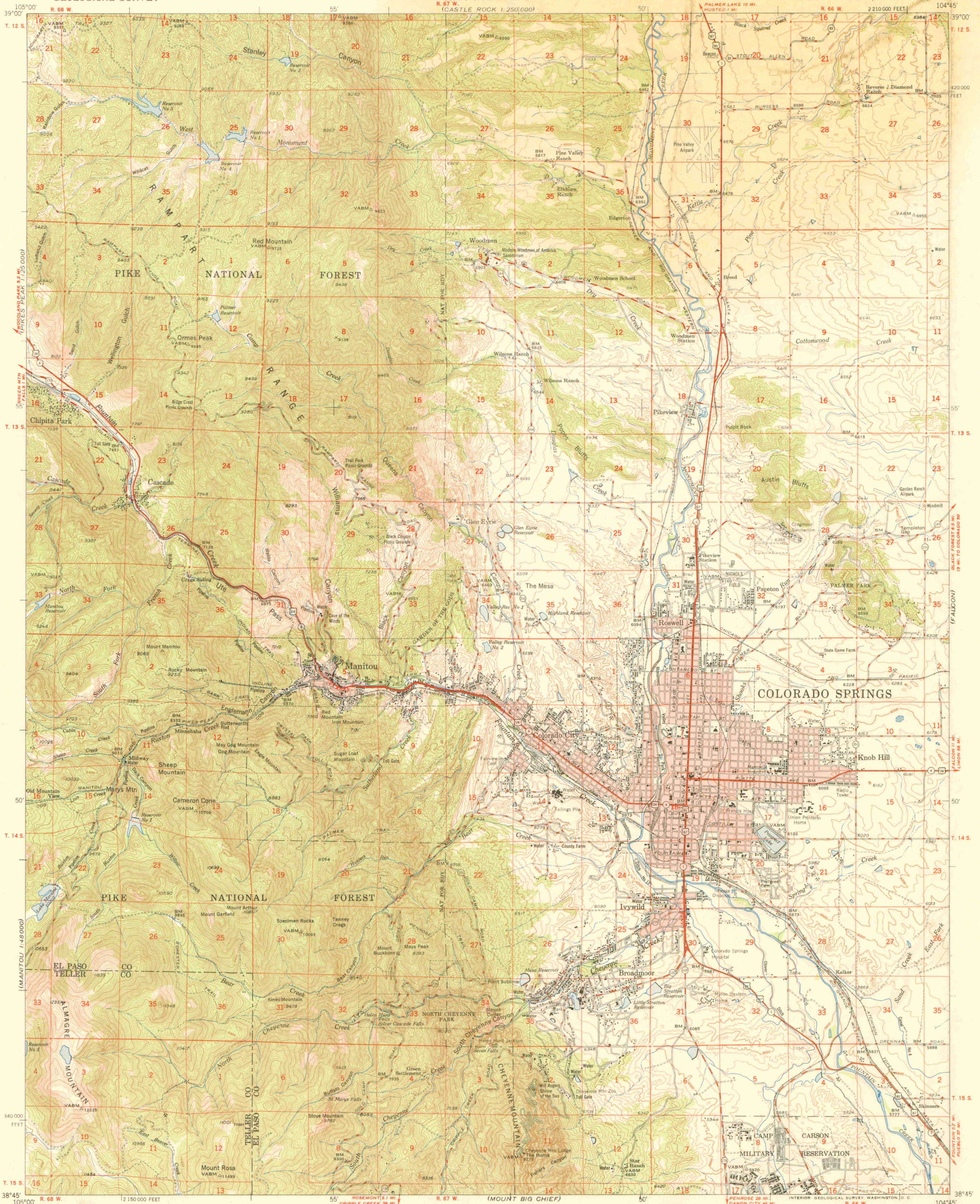
(PLATTE CANYON
1:250,000)

UNITED STATES
DEPARTMENT OF THE INTERIOR
GEOLOGICAL SURVEY

UNITED STATES
DEPARTMENT OF THE ARMY
CORPS OF ENGINEERS
(CASTLE ROCK 1:250,000)

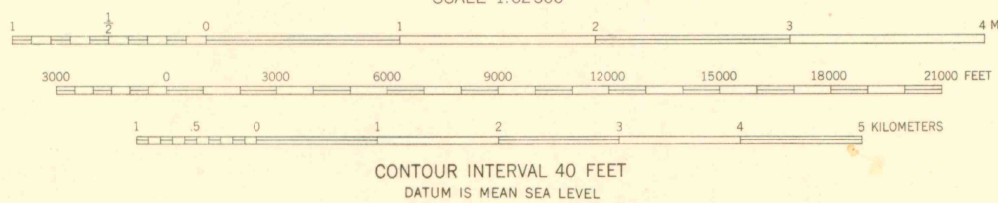
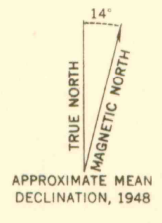
COLORADO SPRINGS QUADRANGLE
COLORADO
15 MINUTE SERIES (TOPOGRAPHIC)

(ELBERT)



(PIKES PEAK
1:250,000)

Mapped, edited, and published by the Geological Survey
Control by USC&GS and GS
Topography from aerial photographs by multiplex methods
Aerial photographs taken 1947. Field check 1948
Polyconic projection. 1927 North American datum
10,000-foot grid based on Colorado coordinate system,
central zone
Red tint indicates area in which only
landmark buildings are shown



ROAD CLASSIFICATION

HARD SURFACE ALL WEATHER ROADS	DRY WEATHER ROADS
Heavy-duty LANE LANE	Improved dirt
Medium-duty LANE LANE	Unimproved dirt
Loose surface, graded, or narrow hard surface	
U. S. Route	State Route

THIS AREA IS ALSO COVERED BY 1:24,000
SCALE MAPS OF THE CASCADE PEAKVIEW,
COLORADO SPRINGS, AND MANITOU 7.5
MINUTE QUADRANGLES.

COLORADO SPRINGS, COLO.
N3845-W10445/15

OFFICE COPY

THIS MAP COMPLIES WITH NATIONAL MAP ACCURACY STANDARDS
FOR SALE BY U. S. GEOLOGICAL SURVEY, FEDERAL CENTER, DENVER, COLORADO OR WASHINGTON 25, D. C.
A FOLDER DESCRIBING TOPOGRAPHIC MAPS AND SYMBOLS IS AVAILABLE ON REQUEST

EDITION OF 1951
LIBRARY USE ONLY